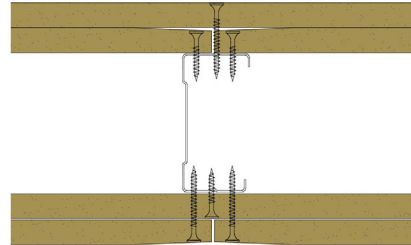


## 70-B-57 - SPEEDLINE System Data Sheet - Version V1 (24-10-23)

SPEEDLINE 70mm 'C' Stud Partition @600mm Ctrs,  
with 2x BG Gyproc 12.5mm WallBoard each side



### System Performance Breakdown

Fire Resistance:

BS476 Part 22:1987:

Test Ref & Date or Applied Ref & Report:

Max Height:

Thickness:

Duty Grade: BS 5234: Part 2:1992:

Sound Insulation:

**60/60 Minutes** (Integrity/Insulation).

**BTC 17580F - BRE Report P102396-1011A**

**Refer to Speedline Specification Clause**

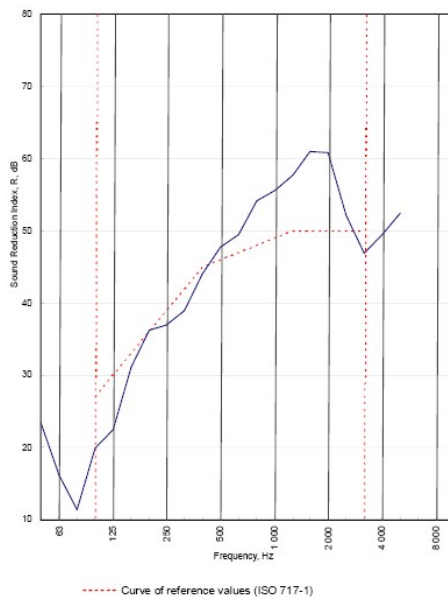
**122 mm.** (At Base Track, Excluding Finishes)

**Severe - Annexes A-F**

**46  $R_w$ dB**, Date Tested or Assessed Against - 14/07/2011

Test Code:  
**H17486AA**  
Test Date:  
14/07/2011

| Freq. Hz | R dB |
|----------|------|
| 50       | 23.4 |
| 63       | 16.2 |
| 80       | 11.4 |
| 100      | 19.9 |
| 125      | 22.4 |
| 160      | 31.1 |
| 200      | 36.2 |
| 250      | 36.9 |
| 315      | 39.0 |
| 400      | 44.0 |
| 500      | 47.7 |
| 630      | 49.5 |
| 800      | 54.2 |
| 1 000    | 55.6 |
| 1 250    | 57.7 |
| 1 600    | 61.0 |
| 2 000    | 60.9 |
| 2 500    | 52.1 |
| 3 150    | 46.9 |
| 4 000    | 49.4 |
| 5 000    | 52.4 |
| 6 300    |      |
| 8 000    |      |
| 10 000   |      |



Rating according to BS EN ISO 717-1:1997  **$R_w$  (C;Ctr) = 46 (-3;-9) dB**  
Max dev. 7.6 dB at 125 Hz

Evaluation based on laboratory measurement results obtained by an engineering method:

|                        |                        |                           |
|------------------------|------------------------|---------------------------|
| $C_{50-3150}$ = -5 dB  | $C_{50-5000}$ = -5 dB  | $C_{100-5000}$ = -2 dB    |
| $C_{50-3150}$ = -16 dB | $C_{50-5000}$ = -16 dB | $C_{50-100-5000}$ = -9 dB |

TESTED AT ONE OF THE UKAS ACCREDITED LABORATORIES BELOW

- B.T.C (H-Ref on Graph)
- B.R.E
- AIRO
- S.R.L
- 

Customer: Metsec plc Hepsac Division

BTC 17486A: Page 8 of 10



SPEEDLINE Drywall Systems, Adsetts House, 16 Europa View, Sheffield Business Park, Sheffield, S9 1XH.

Tel: 0114 231 8030.

Email: [enquiries@speedlinedrywall.co.uk](mailto:enquiries@speedlinedrywall.co.uk)

(As per the requirements set out in ISO/IEC 17025:2017 regarding test data the results stated have been carried out by voestalpine Metsec plc as part of the contract to supply Speedline Metal Sections to SIG Plc)